The background of the slide is a light gray gradient, decorated with numerous realistic water droplets of various sizes. Some droplets are in sharp focus in the foreground, while others are blurred in the background, creating a sense of depth. The droplets are scattered across the entire page, with a higher concentration in the top and bottom corners.

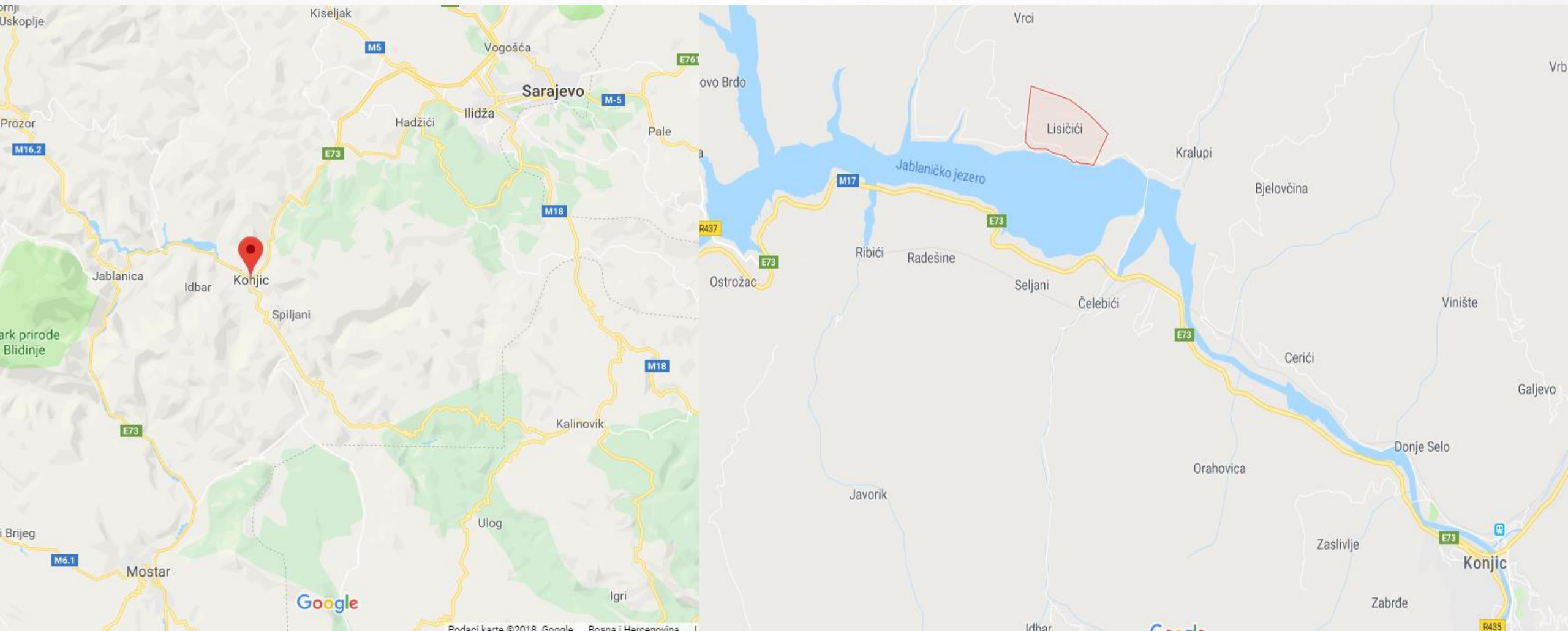
"CONSTRUCTION OF A HYDROELECTRIC POWER PLANT DAM JABLANICA: THE HUMAN RIGHTS VIOLATIONS OF THE POPULATION FROM THE SUBMERGED AREAS OF THE JABLANIČKO LAKE"

ASJA BORIĆ

THE CITIZEN ASSOCIATION OF THE SUBMERGED AREAS OF LISIČIĆI
KONJIC

WHERE ARE WE ?

- BOSNIA AND HERZEGOVINA, MUNICIPALITY OF KONJIC
- LISIČIĆI – JABLANIČKO LAKE, 30 KILOMETRES (RIVER NERETVA, 230 KILOMETRES)



CONSTRUCTION OF A HYDROELECTRIC POWER PLANT DAM JABLANICA

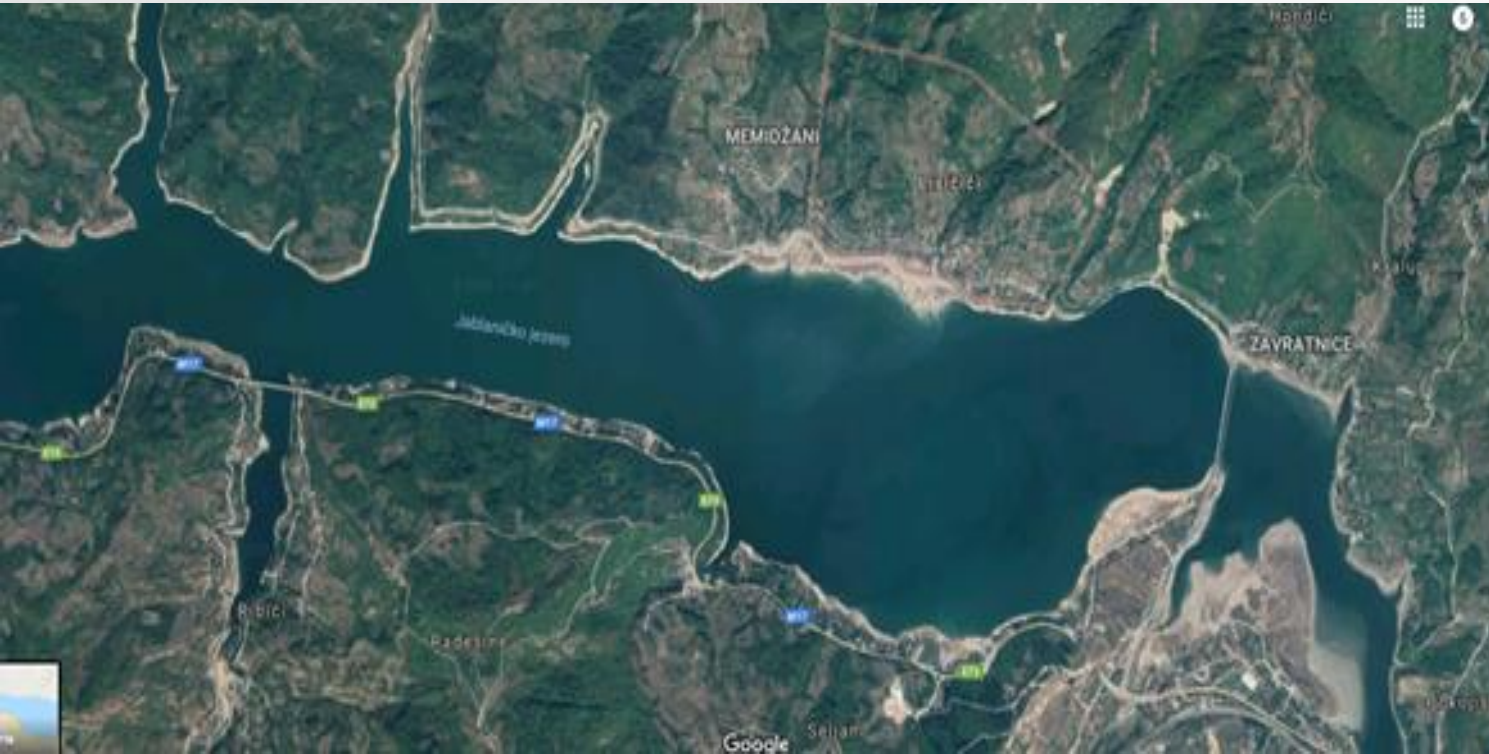
- BUILT IN 1953 IN MUNICIPALITY OF JABLANICA AS THE BIGGEST HYDROELECTRIC PROJECT IN EX YUGOSLAVIA
- FORMED ARTIFICIAL JABLANIČKO LAKE ON THE RIVER NERETVA

Primary inflows	Neretva
Primary outflows	Neretva
Basin countries	Bosnia and Herzegovina
Max. length	30 km (19 mi)
Max. width	1,200 m (3,900 ft)
Surface area	24 km ² (9.3 sq mi)
Average depth	70 m (230 ft)
Max. depth	80 m (260 ft)
Surface elevation	270 m (890 ft)
Settlements	Jablanica, Konjic, Prozor-Rama



LISIČIĆI – JABLANIČKO LAKE

- THE SUBMERGED AREAS OF JABLANIČKO LAKE HAD POPULATION OF 4500 – 5000 INHABITANTS: LISIČIĆI, ČELEBIĆI, OSTROŽAC, RIBIĆI, ORAHOVICA, PAPERASKO, ŽUGLIĆI ITD...
- LISIČIĆI, A NEOLITHIC CULTURE SETTLEMENT (10,000 – 2,000 BC)
- ALOJZ BENAC, A BOOK „NEOLITHIC SETTLEMENT IN LISIČIĆI NEAR KONJIC“, THE NATIONAL MUSEUM OF BIH, SARAJEVO 1955.



Arheološki vestnik Ljubljana, vol. 1-46, 1995, str. 33-48

53

Die Elefantendarstellungen der Hvar-Lisičići-Kultur und das Problem ihrer Herleitung

Christian IHDE

Rezime

Irishodite dionka sta dva odlomka keramike poznamajic-kamendofne hvarke kulture z upodobljenim slonem. Ta kultura je imela stike z grsko Diniini kulturo, dokazuje za stike z irishoditejsko kulturo ni.

Avtor je našel številne dokaze za stike hvarke kulture s sodobno kulturo paleo Italije, Malte in severne Afrike, odkoder so znane tudi upodobljene slone in ostale zoonomne motive.

Abstract

The starting-point of the article is two pottery fragments with images of elephants from the late Neolithic Hvar Culture. This culture had contacts with the Greek Diniini Culture, while there is no evidence for contacts with more eastern cultures.

The author has found considerable evidence for the contacts of the Hvar Culture with the contemporary cultures of southern Italy, Malta, and northern Africa, where images of elephants and other zoonomorphic motifs are also known.

BEFORE THE DELUGE

- THE RIVER NERETVA, WHERE BRIEFLY EXPANDS INTO A WIDE VALLEY BELOW KONJIC, PROVIDED LOT OF FERTILE, AGRICULTURAL LAND THERE (14 MIL M2), BEFORE THE LAKE FLOODED MOST OF IT.
- AUSTRO-HUNGARIAN EMPIRE BUILT A RAILWAY IN THE 19TH CENTURY CONNECTING LISIČIĆI WITH THE ADRIATIC COAST, WHICH ENABLED RESIDENTS TO SELL THEIR PRODUCTS (FRUITS, VEGETABLES, ETC.) FROM THE FIELDS AT THE MARKETS OF MOSTAR, SARAJEVO, SPLIT, AND EVEN PADOVA IN ITALY.



THE DELUGE IN 1953: CATASTROPHIC CONSEQUENCES FOR THE POPULATION

IN THE BEGGINIGN OF 1950'S, THE EX-YUGOSLAVIAN REGIME STARTED WITH:

1. CAMPAIGN OF FORCED DISPLACEMENT OF THE POPULATION (4,500 – 5,000 INHABITANTS)
2. EXPROPRIATION OF THE LAND WITH SYMBOLIC COMPENSATIONS
3. DEMOLITION OF THEIR PRIVATE PROPERTY (HOUSES, ORCHARDS, LIVESTOCK, GRAVEYARDS ETC.)
4. CRUEL PUNISHMENTS TO THOSE WHO RESISTED TO REMOVE OR TO THOSE WHO SETTLED NEXT BY THE UPPER LAKE LEVEL



EXPROPRIATION AND DEMOLITION OF THE PRIVATE PROPERTY

- EXPROPRIATION OF LAND WITH SYMBOLIC COMPENSATIONS

1 HECTARE OF THE „JABLANIČKO LAKE“ LAND = 50 EUR (100 EGGS)

1 HECTARE OF THE „BUŠKO LAKE“ LAND = 300 EUR

1 HECTARE OF THE „SALAKOVAC LAKE“ LAND = 12,500 EUR

(Dokumentarni film o gradnji HE Jablanica)



(Dokumentarni film o gradnji HE Jablanica)



- DEMOLITION OF HOUSES, ORCHARDS, GRAVEYARDS, RELIGIOUS SACRAMENTS ETC.

(Dokumentarni film o gradnji HE Jablanica)



(Dokumentarni film o gradnji HE Jablanica)



- EVERYTHING NEEDED TO BE REMOVED (EVERY HOUSE, EVERY TREE ETC.) IN ORDER TO MAKE THE GROUND FLAT FOR THE LAKE.

(Dokumentarni film o gradnji HE Jablanica)



CAMPAIGN OF FORCED DISPLACEMENT OF THE POPULATION (4,500 – 5,000 INHABITANTS)

- A PART OF THE POPULATION FROM LISIČIĆI WAS FORCEFULLY REMOVED TO THE BARRACKS IN TURIĆI VILLAGE NEAR GRADAČAC (NORTH-EAST OF BOSNIA) BY THE FREIGHT WAGONS.
- THOSE WHO RESISTED AND SETTLED NEXT BY THE UPPER LEVEL OF LAKE WERE CRUELLY PUNISHED



- A LOT OF PEOPLE RETURNED BACK TO THEIR PREVIOUS HOMES AND SETTLED NEXT BY THE UPPER LEVEL OF LAKE.

(Dokumentarni film o gradnji HE Jablanica)



(Dokumentarni film o gradnji HE Jablanica)



(Dokumentarni film o gradnji HE Jablanica)



AFTER THE DELUGE: QUESTS FOR JUSTICE 1953 - 1992

- IN THE AFTERMATH OF DELUGE, THE PEOPLE OF LISIČIĆI COMPLAINED TO THE REGIME IN SARAJEVO, HOWEVER, THEY GOT THREATS THAT EVERYONE WOULD BE KILLED SO THEY WERE LEFT ALL ALONE WITHOUT ANY KIND OF SUPPORT FROM THE GOVERNMENT AND WITHOUT THE LAND THAT USED TO BE THEIR ONLY RESOURCE.



- 10,000 INHABITANTS OF THE VILLAGES FROM THE RIGHT BANK OF THE LAKE WERE COMPLETELY CUT OUT FROM THE COMMUNE WITHOUT A PROPER INFRASTRUCTURE, ROADS, TRANSPORT, BRIDGES, ELECTRICITY, WATER AND FOOD SUPPLY, SEWERAGE, SCHOOLS...

Dokumentarni film o gradnji HE Jablanica)



0:51 / 14:07

(dokumentarni film) Život u Lisičićima poslije potopa



- THE END OF 1960'S: TV DOCUMENTARY MOVIE „VODA KAO HORDA“ BY FAMOUS YUGOSLAVIAN DIRECTOR RADIVOJE LOLA ĐUKIĆ DISPLAYING THE HARSH LIVING CONDITIONS OF INHABITANTS FROM LISIČIĆI IN THE AFTERMATH OF DELUGE, WITH PERSONAL TESTIMONIES OF THEIRS. (VIDEO WAS FORBIDDEN UNTIL THE BEGINNING OF 1990): [HTTPS://BIT.LY/2QRPHVP](https://bit.ly/2QRPHVP)



- THANKS TO THE CONTINUES PROTESTS AND CLAIMS OF ITS' INHABITANTS, LISIČIĆI GOT ELECTRICITY FOR THE FIRST TIME IN 1970'S (FROM THE MUNICIPALITY BUDGET AND NOT FROM THE ELECTRICAL POWER SUPPLIES)
- IN THE MID 1970'S THEY VOLUNTARY BROKE THROUGH THE SOURROUNDING HILLS WITH A DREDGER TOWARDS THE CENTER OF COMMUNE IN KONJIC, FORMING THE MACADAM ROAD OF 12 KM.
- IN THE BEGINNING OF 1990'S, TELECOMMUNICATIONS AND WATER SUPPLY WERE BROUGHT TO LISIČIĆI.

(dokumentarni film) Život u Lisičićima poslije potopa



(dokumentarni film) Život u Lisičićima poslije potopa



- IN THE SECOND HALF OF THE 1970'S, THE EX-YUGOSLAVIAN ELEKTROPRIVREDA HELD A MEETING IN PRISTINA WHERE ITS' BOARD DECIDED TO PAY A CERTAIN AMOUNT OF COMPENSATIONS TO THE MUNICIPALITIES AFFECTED BY THE CONSTRUCTION OF THE HYDROELECTRIC POWER PLANTS.

(dokumentarni film) Život u Lisičićima poslije potopa



- PROTESTS IN 1991: THE CONSTANT STRUGGLE OF LISIČIĆ'S INHABITANTS TO SOLVE THE INFRASTRUCTURE PROBLEM ESCALATED IN 1991 WHEN THEY PROTESTED DURING THE SESSION OF THE MUNICIPAL COUNCIL OF KONJIC BECAUSE OF THE UNEVEN ALLOCATION OF THE FUNDS PROVIDED FROM THE EX-YUGOSLAVIAN ELEKTROPRIVREDA. AFTER THE PHYSICAL POLICE ATTACK TOWARDS THEM, THEY WERE REVOLTED SO THEY BLOCKED THE MAIN ROAD TRAFFIC ON THE SARAJEVO-MOSTAR ROUTE.



3 (dokumentarni film) Život u Lisičićima poslije potopa



- 300 WORKERS AND 150 PUPILS USED TO GO TO WORK OR SCHOOL EVERY DAY THROUGHOUT THE MUDDY ROAD OF 12 KM OR ACROSS THE LAKE OF 1.2 KM WIDTH BY THE POORLY WOODEN BOATS



AFTER THE DELUGE: QUESTS FOR JUSTICE 1996 - 2018

- POSITIVE OUTCOME: AT THE BEGINNING OF 2000'S, POSITIVE SIGNALS WERE PROVIDED BY SUPERVISORY BOARD OF ELEKTROPRIVREDA BOSNIA AND HERZEGOVINA (BIH) AND BY MAYOR OF MUNICIPALITY KONJIC (AS PART OF THE REMAINING OBLIGATIONS OF ELEKTROPRIVREDA BIH).



- A 528 METERS LONG BRIDGE OVER JABLANIČKO LAKE WAS BUILT WITH THE ASPHALTED ROAD THROUGHOUT THE RIGHT BANK IN 2010, ESTABLISHING BETTER CONNECTION WITH THE MAIN ROAD SARAJEVO - MOSTAR.



REMAINING TASKS:

1. FAIR RAPARATIONS

ACCORDING TO THE NEWEST REGULATIONS ADOPTED BY THE FEDERAL PARLIAMENT OF BIH, ELEKTROPRIVREDA BIH IS OBLIGED TO PAY ANNUAL COMPENSATION TO MUNICIPALITIES → MUNICIPALITIES ARE OBLIGED TO INVEST (IN AMOUNT OF AT LEAST 50%) IN INFRASTRUCTURE PROJECTS OF AREAS THAT ARE DAMAGED BY HYDRO ACCUMULATION → THE MUNICIPAL COUNCIL OF KONJIC HAS BEEN VIOLETING THOSE REGULATIONS SO FAR BY IGNORING THE QUESTS OF LISIČIĆI'S INHABITANTS.



2. A MEMORIAL ROOM

OUR ASSOCIATION PRESERVES THE CULTURAL HABITS AND COLLECTS THE CULTURAL OBJECTS FROM THE SUBMERGED AREAS OF JABLANIČKO LAKE AND EXHIBIT THEM IN A SO-CALLED „MEMORIAL ROOM“, A SMALL IMPROVISED MUSEUM IN LISIČIĆI.



3. EXHUMATION AND RELOCATION OF THE GRAVEYARD (A LONG-TERM POSSIBILITY)



MEANING OF OUR LOGO



Udruženje građana
potopljenog
područja Lisičići
Konjic



(Dokumentarni film o gradnji HE Jablanica)



(Dokumentarni film o gradnji HE Jablanica)



THANK YOU !!!

